



1,578

Sq.Ft.



3

Bedrooms



2.0

Bathrooms



1.0

Story



0

Garage

The Nacogdoches is split into two areas: living quarters on the left, and a gathering space on the right. Entering from the covered porch, the small foyer flows into an open family room, dining room, and kitchen, with an adjacent secluded utility room. The kitchen features a walk-in pantry in the corner and a sink island with an eating bar overlooking the family room. To the left of the foyer, a hallway leads to the living quarters, which includes two bedrooms, a full bathroom, and a master suite with a large walk-in closet.

WWW.TILSONHOMES.COM



*Tilson continuously improves home designs and reserves the right to modify home features and specifications without notice or obligation. Square footage is approximate and includes overall dimensions. Renderings are drawn to be substantially correct. Tilson standard features may vary by home design and/or location. Contact a Tilson Sales Associate for details.
Current information as Oct. 10, 2022, 11:40 a.m.*



Elevation A - The Nacogdoches



Elevation B - The Nacogdoches



Elevation C - The Nacogdoches



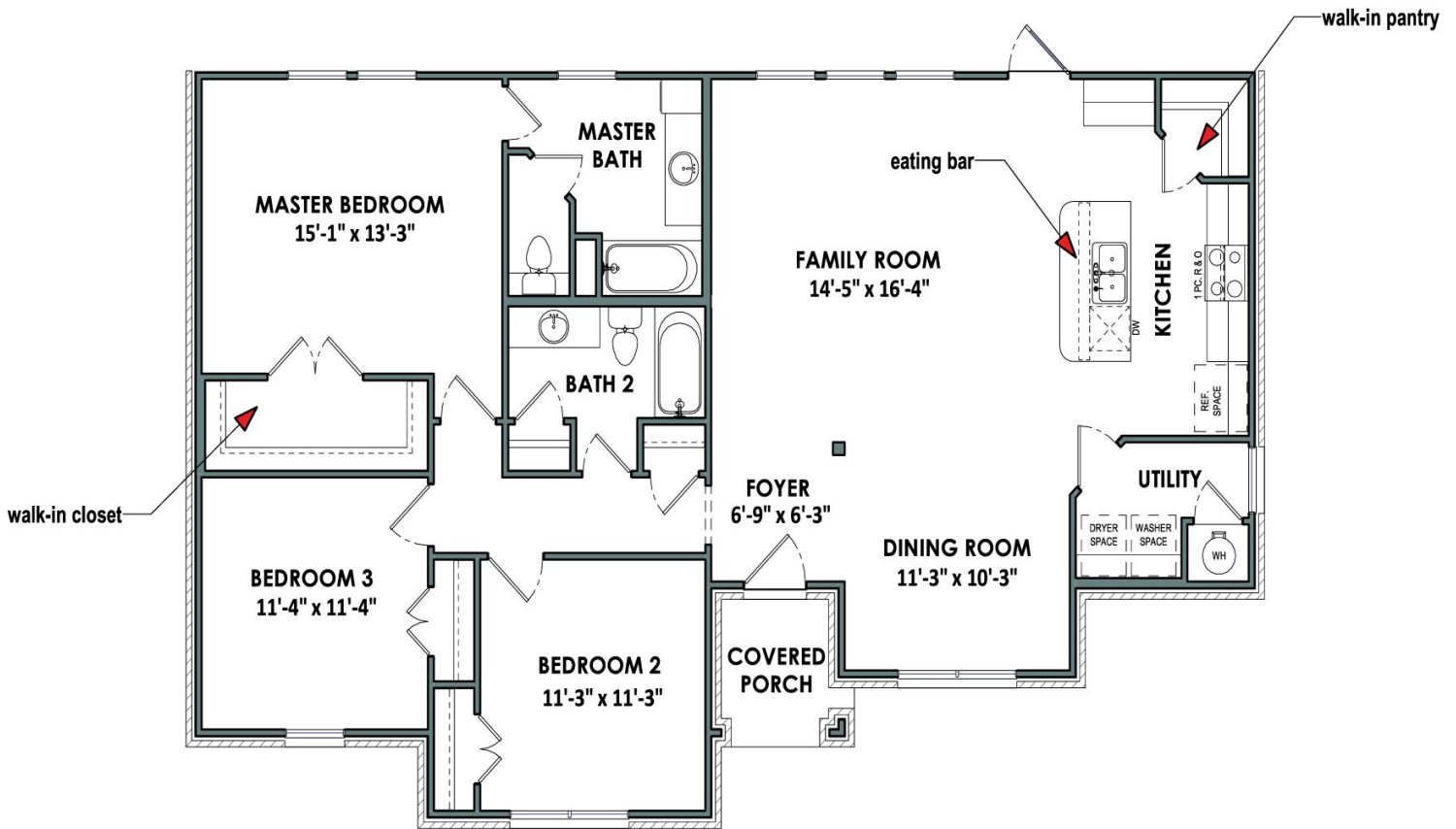
Elevation D - The Nacogdoches

WWW.TILSONHOMES.COM



Tilson continuously improves home designs and reserves the right to modify home features and specifications without notice or obligation. Square footage is approximate and includes overall dimensions. Renderings are drawn to be substantially correct. Tilson standard features may vary by home design and/or location. Contact a Tilson Sales Associate for details. Current information as Oct. 10, 2022, 11:40 a.m.

Floorplan - The Nacogdoches



WWW.TILSONHOMES.COM



Tilson continuously improves home designs and reserves the right to modify home features and specifications without notice or obligation. Square footage is approximate and includes overall dimensions. Renderings are drawn to be substantially correct. Tilson standard features may vary by home design and/or location. Contact a Tilson Sales Associate for details. Current information as Oct. 10, 2022, 11:40 a.m.