



1,923

Sq.Ft.



3

Bedrooms



2.0

Bathrooms



1.0

Story



0

Garage

The Nueces creates a warm and inviting gathering space with distinctly separate and private living quarters. Entering from the covered porch, a long foyer completes the circuit between the family room, kitchen, and dining area, with an eating bar and open counters separating the kitchen and family room. The kitchen also features a work island and walk-in pantry, giving plenty of space to store and prepare food. To the left of the foyer, two bedrooms are separated by a bathroom and utility room. The master suite is situated on the right side of the home, and features a large seated shower, soaking tub, two walk-in closets, and dual vanities.

WWW.TILSONHOMES.COM



*Tilson continuously improves home designs and reserves the right to modify home features and specifications without notice or obligation. Square footage is approximate and includes overall dimensions. Renderings are drawn to be substantially correct. Tilson standard features may vary by home design and/or location. Contact a Tilson Sales Associate for details.
Current information as Nov. 15, 2024, 3:42 p.m.*



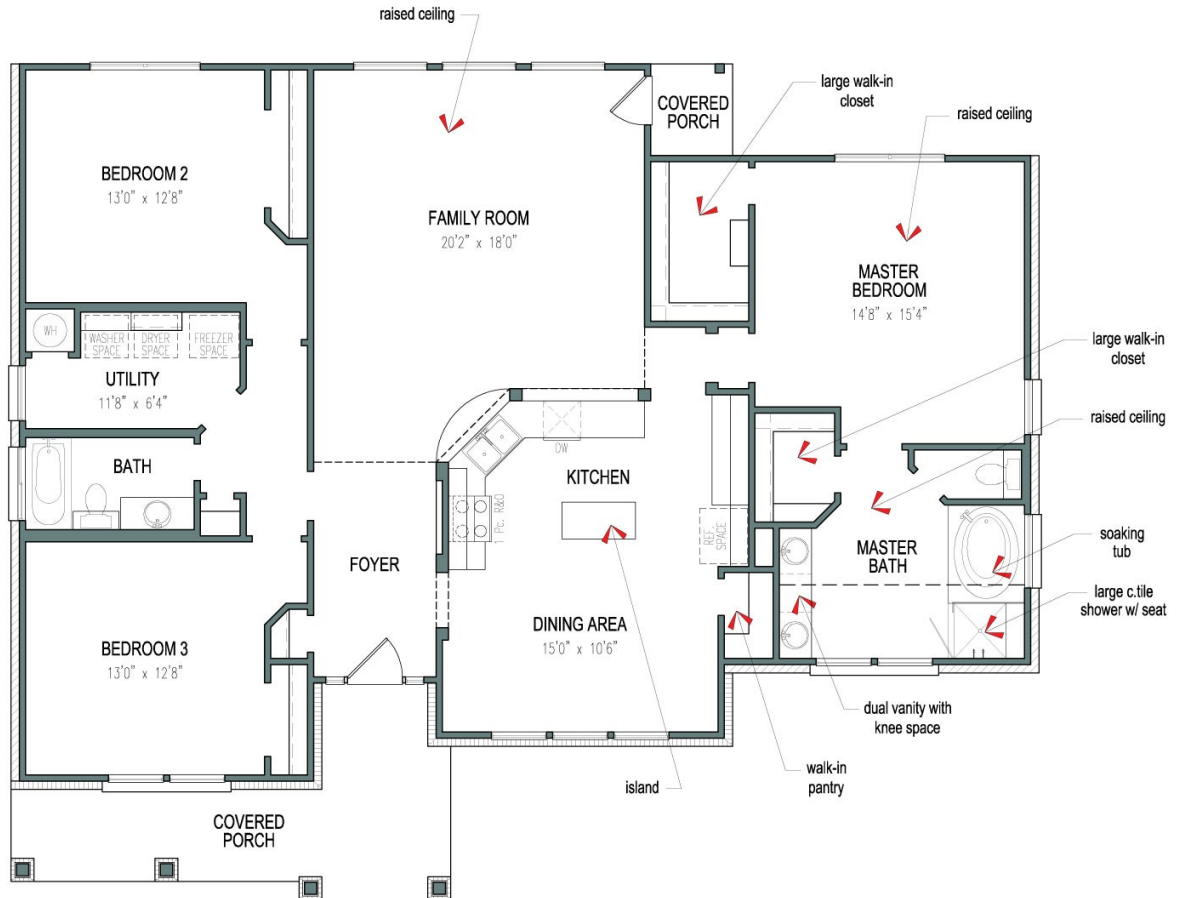
Elevation C - The Nueces

WWW.TILSONHOMES.COM



*Tilson continuously improves home designs and reserves the right to modify home features and specifications without notice or obligation. Square footage is approximate and includes overall dimensions. Renderings are drawn to be substantially correct. Tilson standard features may vary by home design and/or location. Contact a Tilson Sales Associate for details.
Current information as Nov. 15, 2024, 3:42 p.m.*

Floorplan - The Nueces



WWW.TILSONHOMES.COM



Tilson continuously improves home designs and reserves the right to modify home features and specifications without notice or obligation. Square footage is approximate and includes overall dimensions. Renderings are drawn to be substantially correct. Tilson standard features may vary by home design and/or location. Contact a Tilson Sales Associate for details. Current information as Nov. 15, 2024, 3:42 p.m.