



FROM \$321,100



1,834

Sq.Ft.



3

Bedrooms



2.0

Bathrooms



None

Story



None

Garage

The Arlington home offers a modern and spacious design perfect for small families. The expansive family room boasts raised ceilings, sunlight-filled windows, and an open concept to the kitchen's large eating bar for easy entertaining. Near the dining area is a convenient utility room and drop zone plus plenty of storage in the walk-in pantry. Thoughtfully placed on one end is an elegant master suite complete with dual vanities, oversized ceramic tile shower, and ample closet space. Two additional bedrooms share their own full bathroom.

CONTACT US

WWW.TILSONHOMES.COM



Tilson continuously improves home designs and reserves the right to modify home features and specifications without notice or obligation. Square footage is approximate and includes overall dimensions. Renderings are drawn to be substantially correct. Tilson standard features may vary by home design and/or location. Contact a Tilson Sales Associate for details.

Current information as Oct. 24, 2024, 3:48 p.m.



Elevation C | The Arlington



Elevation B | The Arlington



Elevation A | The Arlington



Elevation D | The Arlington

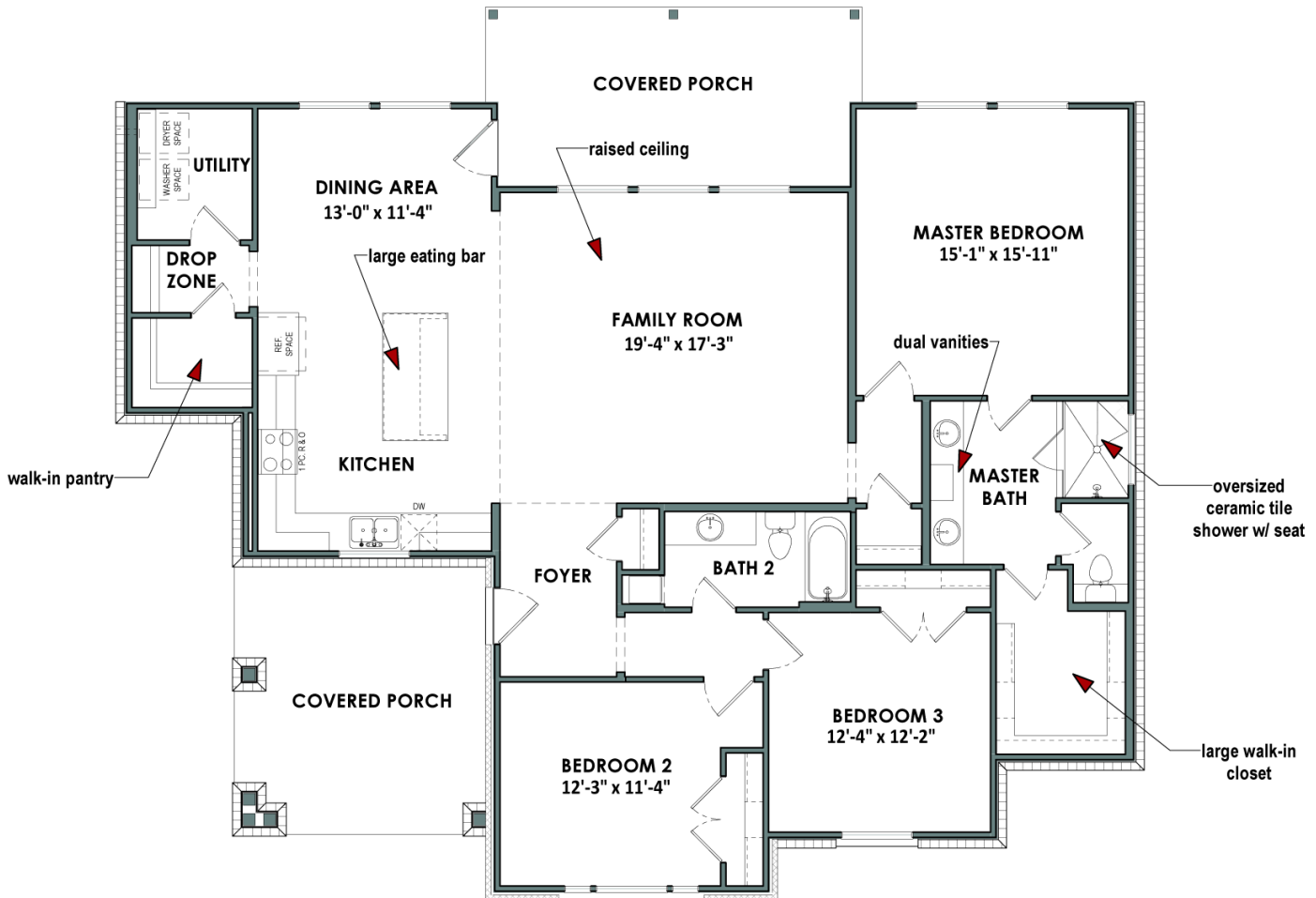
CONTACT US

WWW.TILSONHOMES.COM



Tilson continuously improves home designs and reserves the right to modify home features and specifications without notice or obligation. Square footage is approximate and includes overall dimensions. Renderings are drawn to be substantially correct. Tilson standard features may vary by home design and/or location. Contact a Tilson Sales Associate for details. Current information as Oct. 24, 2024, 3:48 p.m.

Floorplan | Elevation D | The Arlington



CONTACT US

WWW.TILSONHOMES.COM

