



## FROM \$301,200



**1,831**

Sq.Ft.



**3**

Bedrooms



**2.0**

Bathrooms



**1.0**

Story



**0**

Garage

Entering from a small covered porch, the Gonzales features a large and open space made up of the family room, dining area, and kitchen. The kitchen includes a walk-in pantry and island overlooking the space, perfect for gatherings. The rear wall is filled with windows and an exterior door, inviting plenty of sunlight into the home. At the front of the family room, a hallway branches off into a full bathroom, closet space, utility room, and three bedrooms, perfect for large or growing families. The master suite is accessed from the far end of the family room, and includes two spacious walk-in closets.

**CONTACT US**

**WWW.TILSONHOMES.COM**



*Tilson continuously improves home designs and reserves the right to modify home features and specifications without notice or obligation. Square footage is approximate and includes overall dimensions. Renderings are drawn to be substantially correct. Tilson standard features may vary by home design and/or location. Contact a Tilson Sales Associate for details. Current information as Aug. 8, 2023, 3:06 p.m.*

# GONZALES

Rockwall County, TX

**TILSON**  
CUSTOM HOME BUILDERS



Elevation A - The Gonzales



Elevation B - The Gonzales



Elevation C - The Gonzales



Elevation D - The Gonzales

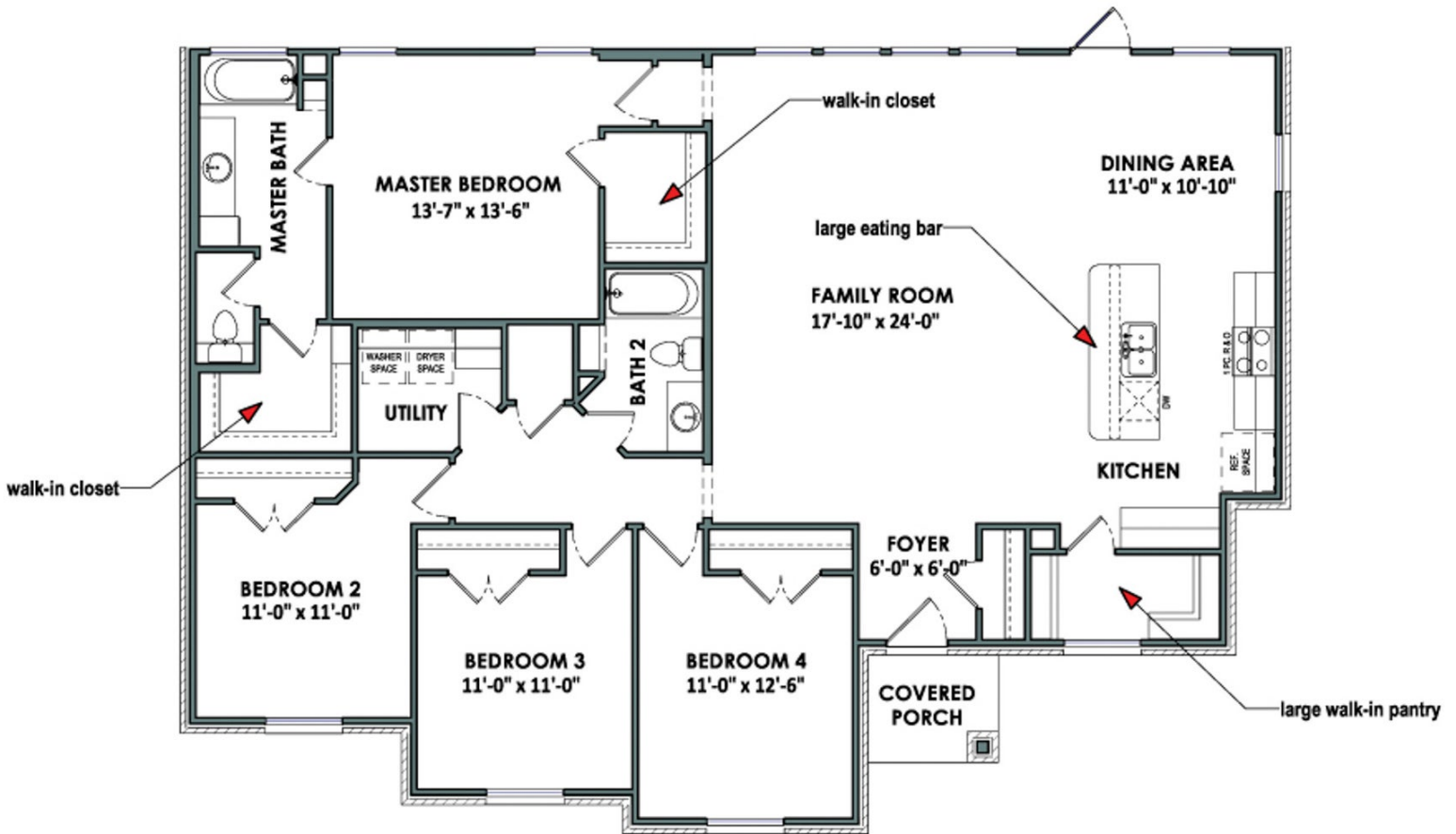
CONTACT US

[WWW.TILSONHOMES.COM](http://WWW.TILSONHOMES.COM)



*Tilson continuously improves home designs and reserves the right to modify home features and specifications without notice or obligation. Square footage is approximate and includes overall dimensions. Renderings are drawn to be substantially correct. Tilson standard features may vary by home design and/or location. Contact a Tilson Sales Associate for details. Current information as Aug. 8, 2023, 3:06 p.m.*

## Floorplan - The Gonzales



CONTACT US

WWW.TILSONHOMES.COM

