



## FROM \$308,000



**1,993**

Sq.Ft.



**4**

Bedrooms



**2.0**

Bathrooms



**None**

Story



**None**

Garage

From the moment you walk into the Bexar, you'll appreciate the open-concept family room that flows into the kitchen and plenty of windows letting in natural light. The generous walk-in closet in the master suite is a dream come true, as is the privacy allowed by the split bedroom design. You'll love the convenience of having a kitchen island with a built-in eating bar and walk-in pantry. There's plenty of space for everyone in this well-thought-out floor plan.

**CONTACT US**

**WWW.TILSONHOMES.COM**





Elevation A | The Bexar



Elevation B | The Bexar



Elevation C | The Bexar



Elevation D | The Bexar

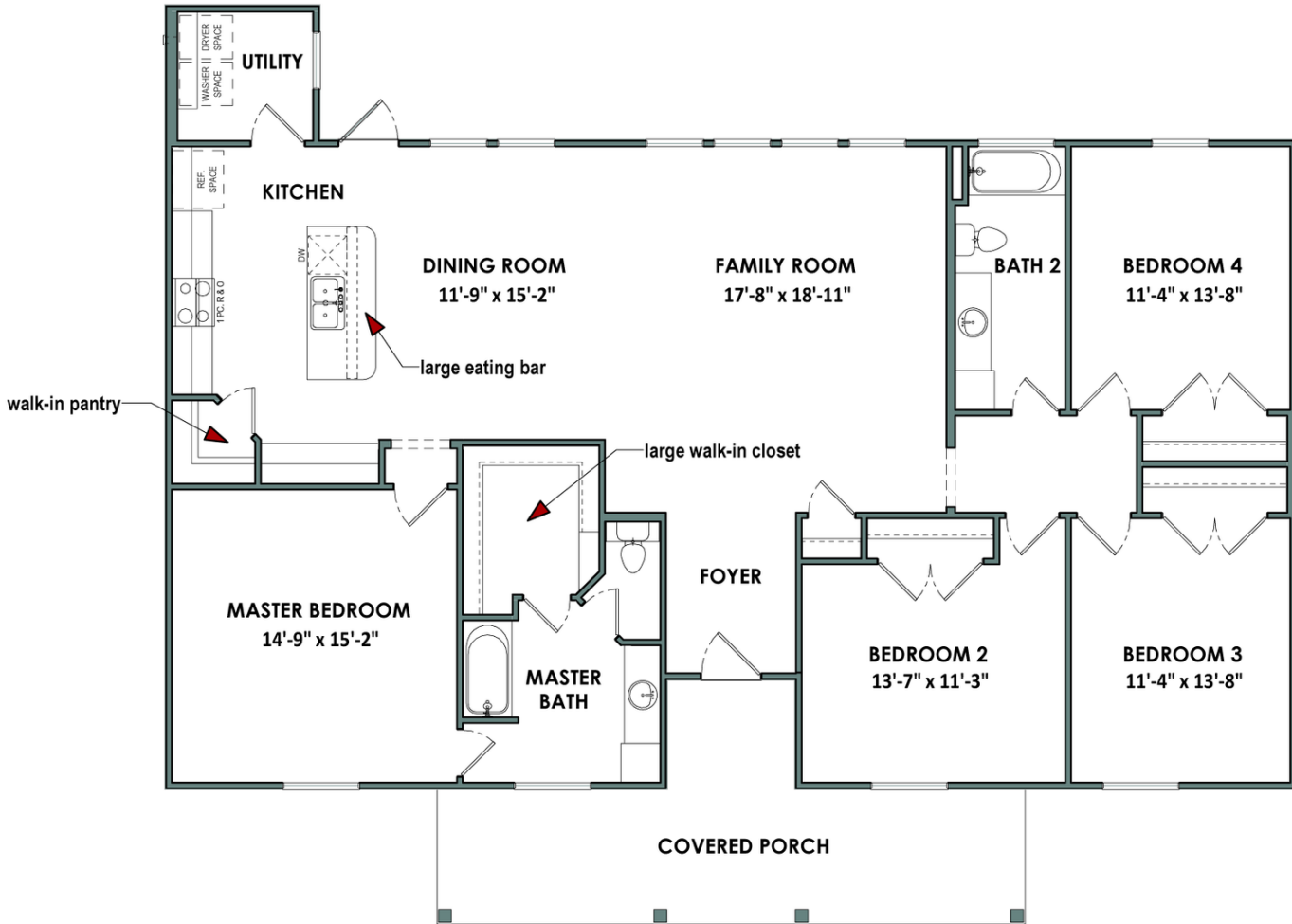
CONTACT US

[WWW.TILSONHOMES.COM](http://WWW.TILSONHOMES.COM)



*Tilson continuously improves home designs and reserves the right to modify home features and specifications without notice or obligation. Square footage is approximate and includes overall dimensions. Renderings are drawn to be substantially correct. Tilson standard features may vary by home design and/or location. Contact a Tilson Sales Associate for details. Current information as June 7, 2023, 9:04 a.m.*

## Floor Plan | Elevation C | The Bexar



CONTACT US

[WWW.TILSONHOMES.COM](http://WWW.TILSONHOMES.COM)

